

IndiGo

Giving independence
through motorised
shower chairs



Welcome to Wealden Rehab



Simon Campbell
Managing Director

Over the course of many years, we have supported professionals throughout the UK with assessing and providing solutions for bathing and hygiene. Our market leading range of shower chairs has given thousands of users' comfort and support when attending to personal care; our growing portfolio of different models and accessories make it easy for you to specify a perfectly client-centred solution.

We continually assess our products against the current market and environment, working closely with healthcare professionals to take on board valuable insight into work experiences and any challenges in the industry.

The Wealden Rehab product portfolio caters for a spectrum of users, from children to adults and bariatrics, and meet the changing needs and challenges of adults and plus size clients. Offering the IndiGo shower chair range enables us to assist users with varying mobility needs and brings the opportunity to reduce care visits.

Our range of powered chairs offer unique benefits to both our clients and end users. Having some form of independence, where possible, is critical to quality of life for users and impactful to care packages and care staff. IndiGo shower chair functions promote independence in any household and allow users to carry out certain tasks that would normally require assistance.

Whatever your need, we would love the opportunity to introduce you to the range, and our specialist team of advisors are here to assist you.

Training can be delivered virtually or in person. Our online resources are continually expanding, and you'll find details and specifications of each model.

Visit our website at wealdenrehab.com/indigo-shower-chairs.

When you partner with Wealden Rehab, you will get a solution to be proud of – we look forward to working with you!

IndiGo independent showering

Promote user independence

IndiGo shower chairs are designed to promote independence during daily bathing and toileting routines and remove some carer intervention.

Functions that promote independence

POWERED DRIVE

POWERED HEIGHT ADJUSTMENT

POWERED TILT IN SPACE

POWERED RECLINE

Safer care

The moving and handling of people is a regular task in health and social care, which if not done safely, can cause serious injury to users and staff.

Without the correct equipment, many carers are left to carry out tasks which strain their musculoskeletal system when pushing, bending, turning, stretching, and twisting.

This greatly increases with a heavier user, when the environment is limited for space and when there is a requirement to move a user on the equipment.



Reduce care assistance

IndiGo shower chairs can promote independence and help reduce the need for multiple carers. This offers more flexibility for care visit timing and helps establish better relationships with fewer care workers.

IndiGo Features



Powered drive

With powered drive, IndiGo promotes independence within the home and bathroom. This allows the user to be able to carry out personal tasks without the need for assistance and can eliminate the need for additional care.

The powered drive will also make it easier when caring for heavier patients and when there are carpets or thresholds.



Powered height adjustment

Electric height adjustment assists with showering and other hygiene routines being carried out by one caregiver. It also facilitates personal one-to-one interactions and reduces risk of injury by the care giver, as you're able to work at the correct height.

Height adjustment also allows for easier side transfers and requires less assistance from the carer.



Powered tilt in space

It can be difficult to position the user correctly when there is no tilt in space function.

The powered tilt in space reduces the risk of sliding out of the chair and provides support for the user to become more independent.

The ability to tilt forward a few degrees can also promote mobility while the user is able.



IndiGo Drive



The shower chair that promotes increased independence for users

- ✓ Easier transport for both user and carer
- ✓ Joystick control for independence
- ✓ Aides care of bariatric users
- ✓ Wide range of accessories

IndiGo Drive is suitable for independent users up to 200kg who are capable of using a joystick to control electric powered movement.

The joystick helps the user to become totally or partly independent during the daily bathing and toileting routines.

When required, the joystick can easily be transferred to the rear of the chair for use by a carer.



Order code: N7027

IndiGo Drive T



Joystick control for tilt, forward and backward drive

- ✓ For the self-sufficient user
- ✓ Accommodates users up to 140kg
- ✓ Reduces care assistance
- ✓ The seat angle can be adjusted from -7° to 37°

The Drive T model is for the user who is capable of using the joystick function to help them self manage.

The electrical system secures a comfortable and even tilt function which also helps when transferring to the chair.

If required, the joystick can also be placed on the back of the chair.



Order code: N6969

IndiGo Drive HT



The motorised drive shower chair with electric tilt, height adjustment

- ✓ The seat angle can be adjusted from -5° to 35°
- ✓ Maintenance free 125mm castors
- ✓ Accommodates users up to 150kg
- ✓ Electronically adjustable seat height from 53 to 95cm

The IndiGo Drive HT can accommodate users up to 150kg and offers motorsied drive and electric height adjustment from 53 to 95cm.

The seat angle can be tilted from -5° to 35° backwards, using the hand control, while the adjustable back provides good additional support.

A range of accessories are available to extend function and comfort.

Order code: N7001



IndiGo Drive T Plus



The joystick control shower commode chair for larger users

- ✓ For the self-sufficient user, reduces care assistance
- ✓ Accommodates users up to 200kg
- ✓ 560mm between the armrests
- ✓ The seat angle can be adjusted from -5° to 30°

The IndiGo Drive T Plus is for self-sufficient users up to 200kg who are capable of using the joystick and to self manage toileting and bathing.

The joystick controls both forward and backward drive, and tilt. When required the joystick can easily be transferred to the rear of the chair for use by a carer.

This 200kg model measures 560mm between the armrests, which enables the user to be lifted into the chair and placed safely.

Order code: N7033



IndiGo HT



The shower chair with electric tilt and height adjustment

- ✓ Available with standard or horseshoe seat
- ✓ Support for users up to 150kg
- ✓ Wide range of accessories

The IndiGo HT features a seat height of 53cm for standing transfers and can accommodate users up to 150kg.

The seat height can be adjusted to 95 cm, and the seat angle can be tilted from -5° to 35° using the hand control.

An adjustable netweave backrest ensures optimal support and a comfortable experience.

Order code: N6981



IndiGo HTM



A low seat height shower chair for children and small adults

- ✓ Seat tilts forward and backwards
- ✓ Electrically adjusted seat height
- ✓ Wide range of accessories

The IndiGo HTM features a low seat height of 48cm to aid access for children and small adult users up to 80kg.

The seat height can be adjusted to 92cm, and the seat angle can be tilted from -5° to 30° using the hand control.

The armrests on the IndiGo HTM are equipped with soft PU foam and quick release locks, while the adjustable netweave backrest ensures optimal support and a comfortable experience.

Order Code: N6997



IndiGo HTR



The shower commode chair that's designed for optimum positioning

- ✓ Seat tilt adjustment from -6° to 36°
- ✓ Seat height can be electrically adjusted from 53-97 cm

The IndiGo HTR is a compact, highly adjustable shower chair, used for both individuals and multi-user applications.

The seat height can be tilted from -6° to 36° . The angle between seat and back can be angled from 86° to 125° and the seat height can be electrically adjusted from 53-97 cm.

The IndiGo HTR is a flexible chair which makes it suitable for patients with a wide range of both physiological and neurological conditions.



Order code: N7007

IndiGo Plus HT



The IndiGo Plus HT shower chair can accommodate many seat widths

- ✓ Support for users up to 200kg
- ✓ Electrically adjusted seat height
- ✓ PU foam seats

The IndiGo Plus HT shower chair can accommodate users up to 200kg. The seat height can be electrically height adjusted from 52 to 101 cm while the seat angle can be tilted -5° forwards to 35° using the hand control.

It features quick release snap-to-lock armrests fitted with soft PU foam and wheels that are resistant to hair and dirt.

There are a wide range of accessories that offer good customisation options for individual users.



Order Code: N6993

IndiGo Plus HTX



The largest IndiGo shower commode chair in the range

- ✓ Accommodates users up to 250kg
- ✓ Electric height adjustment is independent of seat angle
- ✓ Wide range of accessories

The IndiGo Plus HTX is designed to carry a maximum weight of 250kg. It has seat width of 74cm that is extra soft for optimal comfort and with 70cm between the armrests it can accommodate larger users.

The seat height can be electrically adjusted from 59cm to 95cm while the seat angle can be adjusted from -6.5° to 35° using the hand control.



Order code: N6995

Dimensions

IndiGo model	Max user weight – kg	Overall width	Seat height	Overall depth
IndiGo Drive	200kg / 31.5 stone	715mm	565mm	710mm without footrests
IndiGo Drive T	140kg / 22 stone	715mm	565mm	710mm without footrests
IndiGo Drive HT	150kg / 23.5 stone	610mm	530-950mm	1150mm with footrests
IndiGo Drive T Plus	200kg / 31.5 stone	760mm	585mm	700mm without footrests
IndiGo HT	150kg / 23.5 stone	610mm	530-950mm	1150mm with footrests
IndiGo HTM	80kg / 12.5 stone	610mm	480-920mm	1100mm with footrests
IndiGo HTR	125kg / 19.5 stone	610mm	530-970mm	810mm without footrests
IndiGo Plus HT	200kg / 31.5 stone	710mm	550-1010mm	1120mm including footrest
IndiGo Plus HTX	250kg / 39 stone	870mm	590-950mm	1090mm

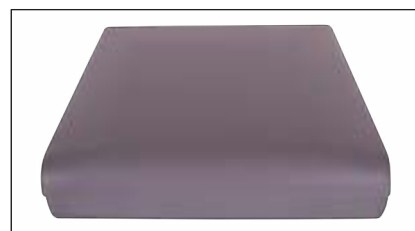
Accessories



Full Footplate Neoprene



Height and Angle Adjustable Footrest



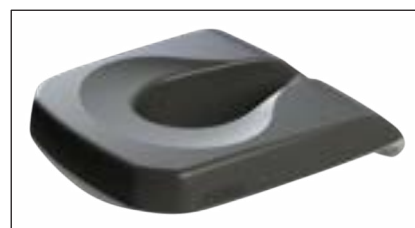
Lid for Standard Seat



Longer Seat with Aperture



Longer Seat with Horseshoe



Pressure Relief Seat



Seat with Reversed Opening



Lateral Support Right and Left



Splash Guard

Customer support

Joint visits

We offer joint visits at your client's home for a variety of our Wealden Rehab bathing & Hygiene and moving and handling products. Our Product Specialists recommend the specification to meet the clinical need of the user and their environment. They will ensure the product is supportive and comfortable, is suitable for the home layout and structure, and is adaptable for quality of life.

Below is a selection of our products that we offer assessments for.

SHOWER CHAIRS

SHOWER TROLLEYS

CEILING HOISTS

TURTLE BATH SUPPORTS

Customer care

The Wealden Rehab team are dedicated to sourcing solutions for Healthcare Professionals, Budget Holders, Loan stores, Hospitals and Care Homes. We pride ourselves in ensuring care and attention is provided throughout the product sourcing, assessing and build processes. From your initial enquiry through to product delivery, we are here for you.

PRODUCT ADVICE

PRODUCT RESOURCES

PRODUCT TRAINING

PRODUCT DEMONSTRATIONS

Product training

Claim your CPD benefits with our product training

Personal and professional development helps you on your learning journey throughout your career. Continuous learning helps with your career development and keeps your skills and knowledge up to date.

Our Training Program has been very popular and is highly recommended by prescribers who have participated.

We provide tailor-made training sessions based on the interests of the participants, from specific training on our shower chair, seating and overhead hoist ranges, to discussing the specifier tools and technical product training for engineers. Our wide spectrum of training has brought very positive feedback.

Typical training context and why prescribers find them so valuable:

- Supporting users with complex postural and pressure needs
- Understanding equipment limitations and their compatibility with the user's utilities
- How to support plus size users
- Tailored Q&A session to support your needs

Typical learning outcomes form our CPD sessions include:

- Attendees are often capable of re-training internally
- The value of the training often results in resolutions for clients
- Helps with professional development
- Assists with proficient practicing for multiuser needs

Online sessions

Face to face CPDs are extremely useful but there may be situations where it would be more beneficial to demonstrate via an online session. Our clients are logging in from locations all over the UK.

Book a session

It's easy to arrange, call **01634 813388** or use the booking form at **wealdenrehab.com/training**.



01634 813388
hello@wealdenrehab.com
www.wealdenrehab.com



113 Hopewell Drive, Chatham, Kent ME5 7NP | Wealden Rehab is a trading name of Wealden Rehab Ltd

